

LANDCARE IN THE WESTERN RIVERINA

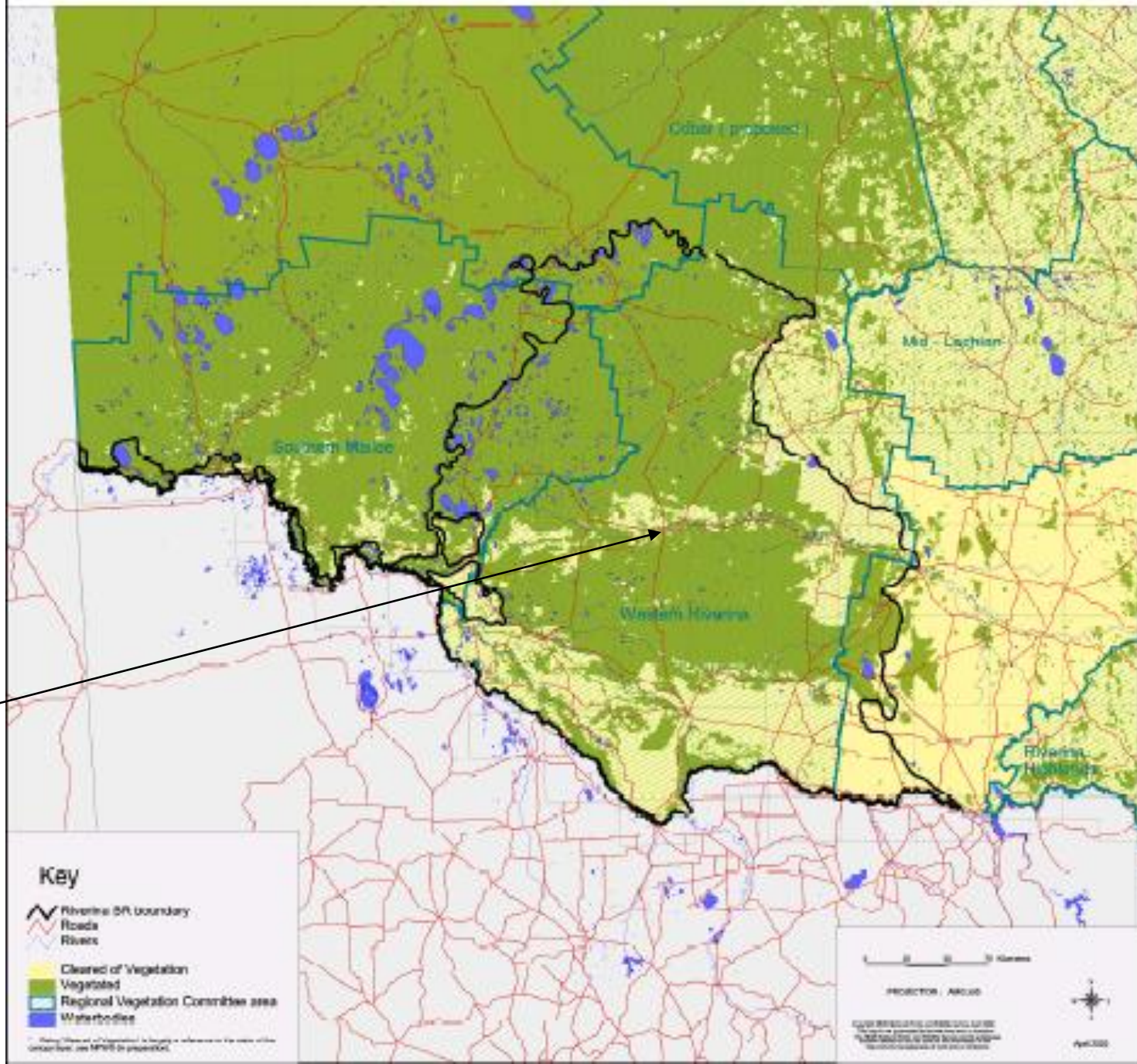


Riverina bioregion characteristics:

- Freehold rangeland zone (cf Western Lands leases)
- Stocking rates not regulated (cf Western Lands) and relatively high
- No current agency with responsibility for rangeland issues
- No assistance packages for graziers (cf West 2000 Program)
- Highly visible - close to population and tourism centres and intersected by two major highways
- Iconic status - sheep studs and riverine plain landscape

RIVERINA BIOREGION

Hay



Key

- Riverina IBRA boundary
- Roads
- Rivers
- Cleared of Vegetation
- Vegetated
- Regional Vegetation Committee area
- Waterbodies

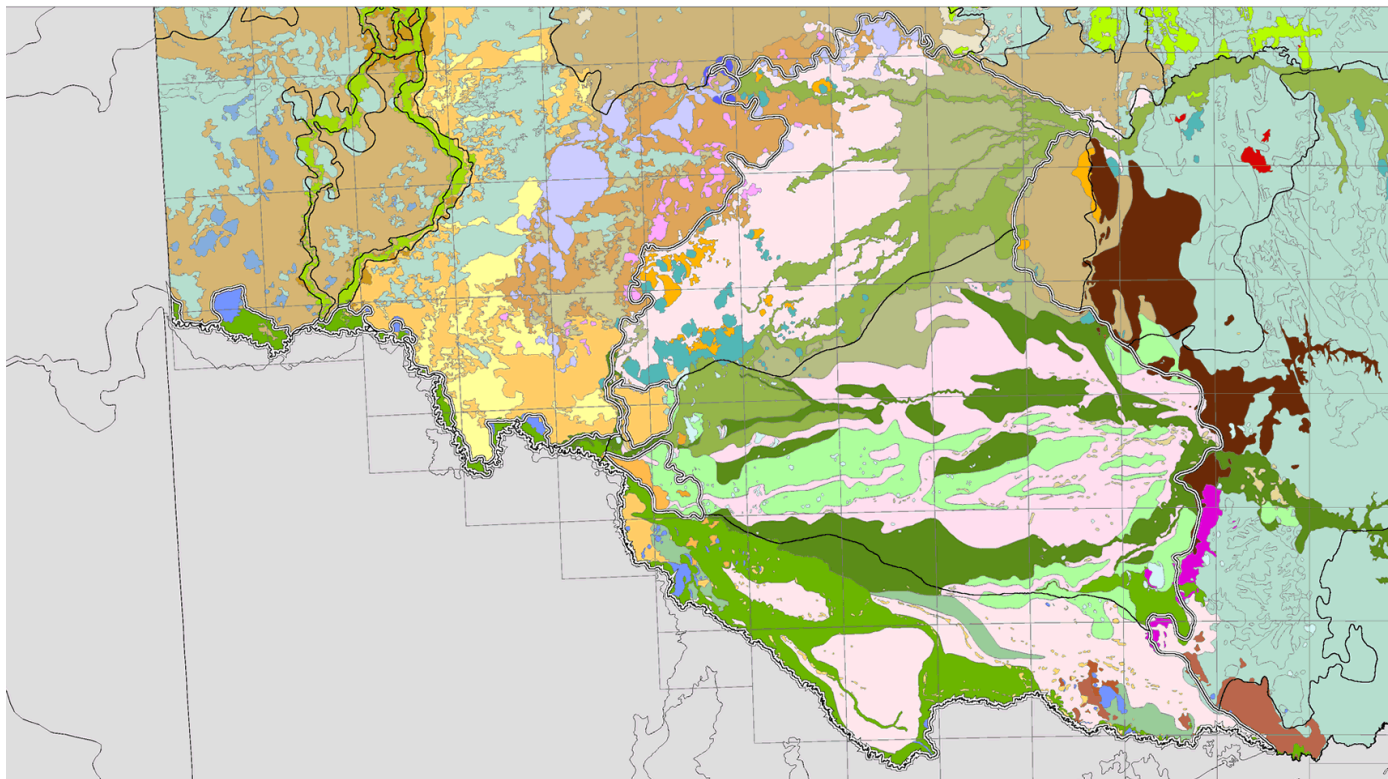
0 10 20 Kilometres

PROJECTION: AALC08



CLIMATE INFORMATION COUNCIL OF AUSTRALIA
RIVERINA BIOMONITORING PROGRAM
RIVERINA BIOMONITORING PROGRAM
RIVERINA BIOMONITORING PROGRAM




Riverina Biogeographic Region (IBRA) - Subregions and Landscapes (Mitchell, in preparation)



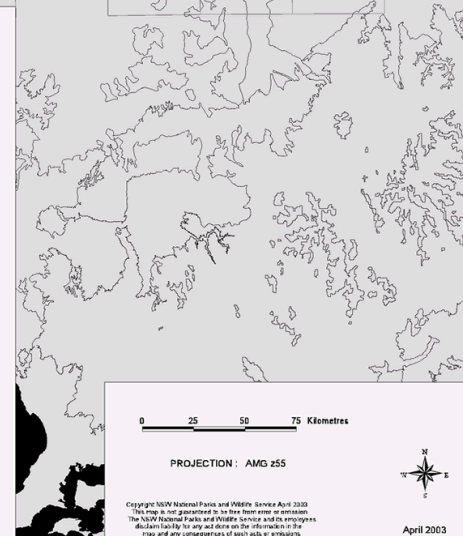
Key

 Subregion boundaries (IBRA)
 Riverina (IBRA)

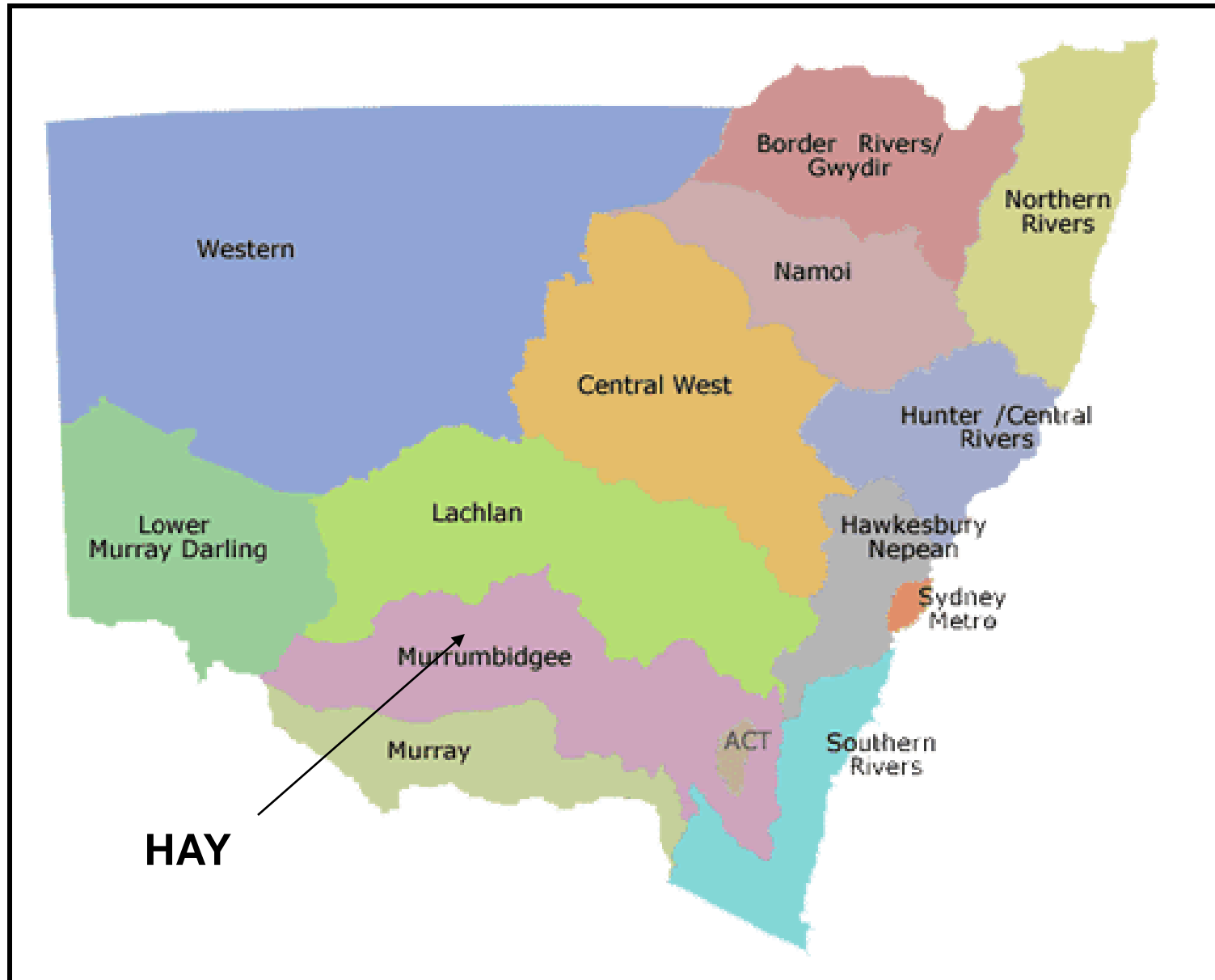
Landscapes of the Riverina

-  Albury-Oaklands Hills and Footslop
-  Buckingong Gravels
-  Cocoparra Basalt Hills
-  Cocoparra Ranges and Footslopes
-  Ivanhoe-Nangara Linear Dunes
-  Ivanhoe-Nangara Sandplains
-  Lachlan Channels and Floodplains
-  Lachlan Depression Plains
-  Lachlan Lakes, Swamps and Lunettes
-  Lachlan Sandplains
-  Lachlan Scalded Plains
-  Lachlan Source-bordering Dunes
-  Lower Darling Alluvial Plains
-  Lower Darling Channels and Floodplains
-  Mallee Cliffs Linear Dunes
-  Mallee Cliffs Sandplains
-  Mungo Lakes Complex

-  Mungo-Marona Lakes and Swamps
 -  Mungo-Marona Linear Dunes
 -  Mungo-Marona Relic Lakes
 -  Mungo-Marona Sandplains
 -  Murray Channels and Floodplains
 -  Murray Depression Plains
 -  Murray Lakes, Swamps and Lunettes
 -  Murray Sandplains
 -  Murray Scalded Plains
 -  Murray Source-bordering Dunes
 -  Murrumbidgee Channels and Floodplains
 -  Murrumbidgee Depression Plains
 -  Murrumbidgee Lakes, Swamps and Lunettes
 -  Murrumbidgee Sandplains
 -  Murrumbidgee Scalded Plains
 -  Murrumbidgee Source-bordering Dunes
 -  Nymagee Downs
 -  Oaklands Hills and Footslopes
 -  Riverina Dunefields
 -  Riverina Sandplains
 -  Scotia Groundwater Basins
 -  Scotia Sandplains
-  Other Landscapes
 IBRA regions interstate



Catchment Management Authorities



Riverina vegetation communities – grazed shrub and grassland



Destructive influences – drought and possible climate change





Destructive influences - excessive stocking rates



Destructive influences – feral pests



Destructive influences - weeds



Destructive influences - weeds

Destructive influences - paddock supplementary feeding



Destructive influences – exotic breeds of livestock



Hay Trees on Plains Landcare Inc







ENRICH PROJECT

Shrub species selection for livestock production

In association with Future Farm Industries CRC









The top 10 shrub species for crude protein content

Scientific name	Common name	Crude protein (%)
<i>Maireana georgii</i>	<i>Satiny saltbush</i>	26
<i>Malva preissiana</i>	<i>Australian or native hollyhock</i>	25
<i>Maireana tomentosa</i>	<i>Felty bluebush</i>	25
<i>Maireana convexa</i>	<i>Mulga bluebush</i>	24
<i>Chenopodium auricomum</i>	<i>Golden goosefoot</i>	24
<i>Maireana brevifolia</i>	<i>Small leaf bluebush, yanga bush</i>	23
<i>Maireana sedifolia</i>	<i>Pearl bluebush</i>	23
<i>Rhagodia drummondii</i>	<i>Lake fringe rhagodia</i>	23
<i>Maireana pyramidata</i>	<i>Sago bush, black bluebush</i>	23
<i>Einadia nutans</i>	<i>Nodding saltbush</i>	22
<i>Atriplex rhagodioides</i>	<i>Silver saltbush</i>	22

Shrub species showing anthelmintic properties

Scientific name	Common name	Parasite development score (% of control)
<i>Viminaria juncea</i>	<i>Swishbush, golden spray</i>	<1
<i>Eremophila maculata</i>	<i>Native fuschia</i>	2
<i>Chenopodium nitrariaceum</i>	<i>Nitre goosefoot</i>	3
<i>Acacia pycnantha</i>	<i>Golden wattle</i>	6
<i>Acacia loderi</i>	<i>Broken Hill gidgee, nelia</i>	9
<i>Acacia saligna</i>	<i>Golden wreath wattle</i>	10
<i>Eremophila longifolia</i>	<i>Emu bush, Berrigan</i>	10
<i>Kennedia eximia</i>	<i>Red coral vine</i>	12
<i>Kennedia prorepens</i>	<i>Purple flowered pea vine</i>	29
<i>Rhagodia candolleana</i>	<i>Sea berry saltbush</i>	42
<i>Enchylaena tomentosa</i>	<i>Barrier saltbush, ruby saltbush</i>	49



Secondary plant compounds: their role in diet selection & gut health of grazing herbivores

Dean Revell, Andrew Kotze, Dean Thomas
CSIRO
Australia